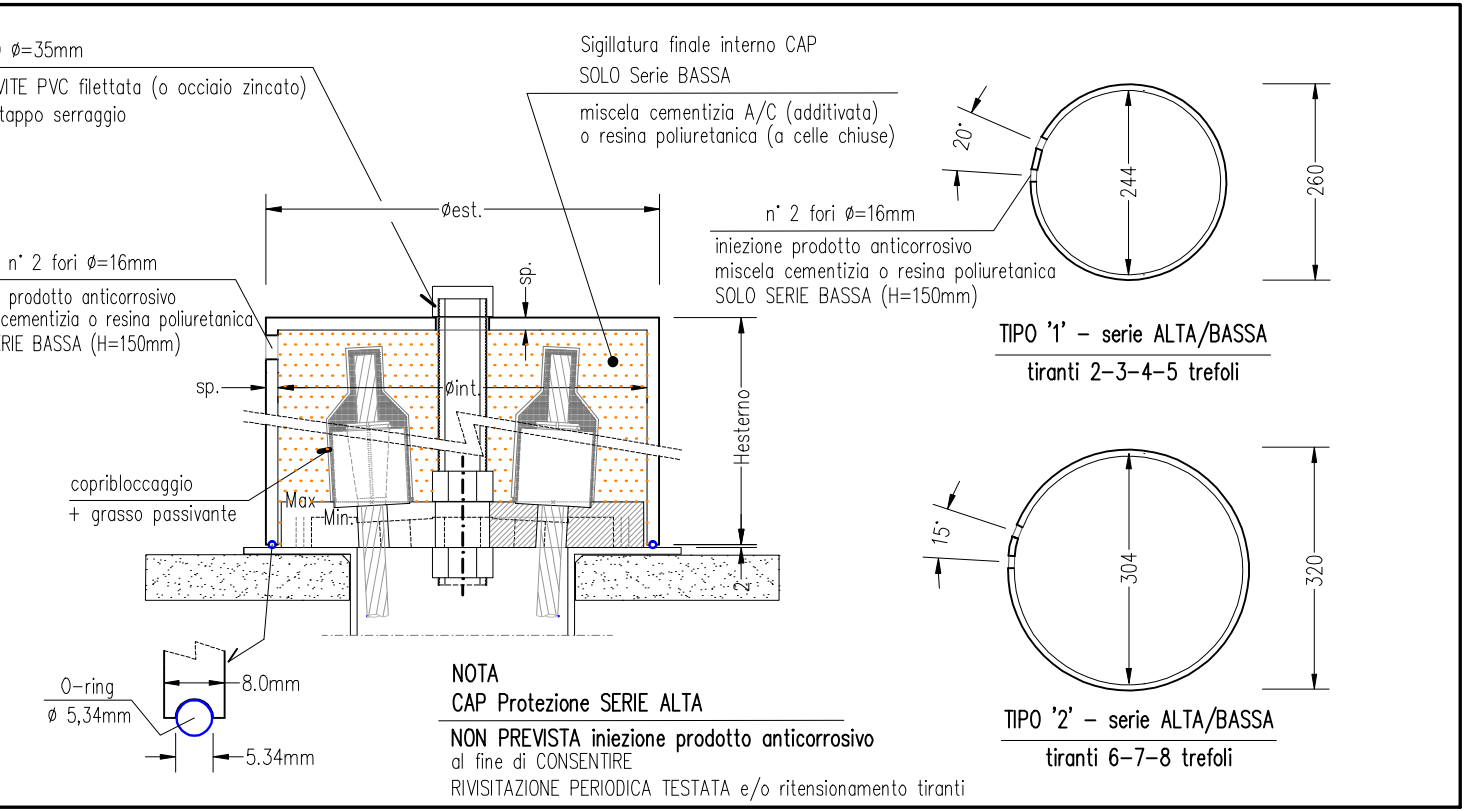
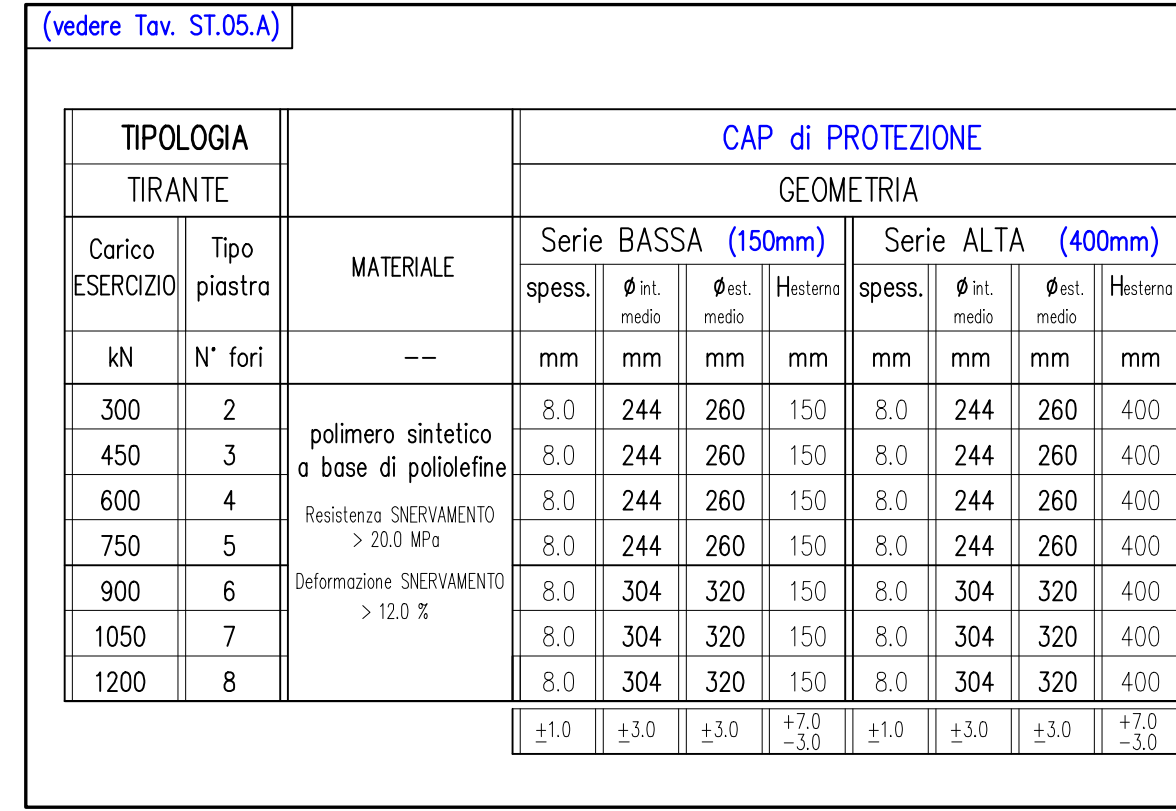
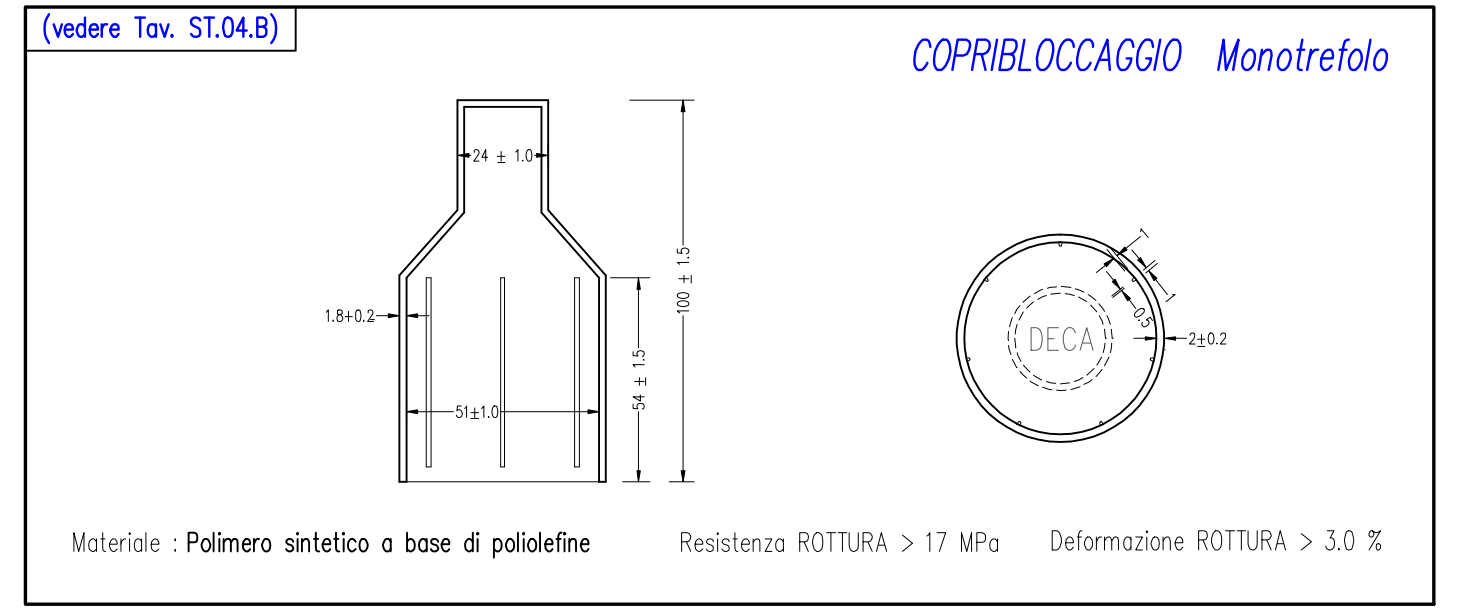
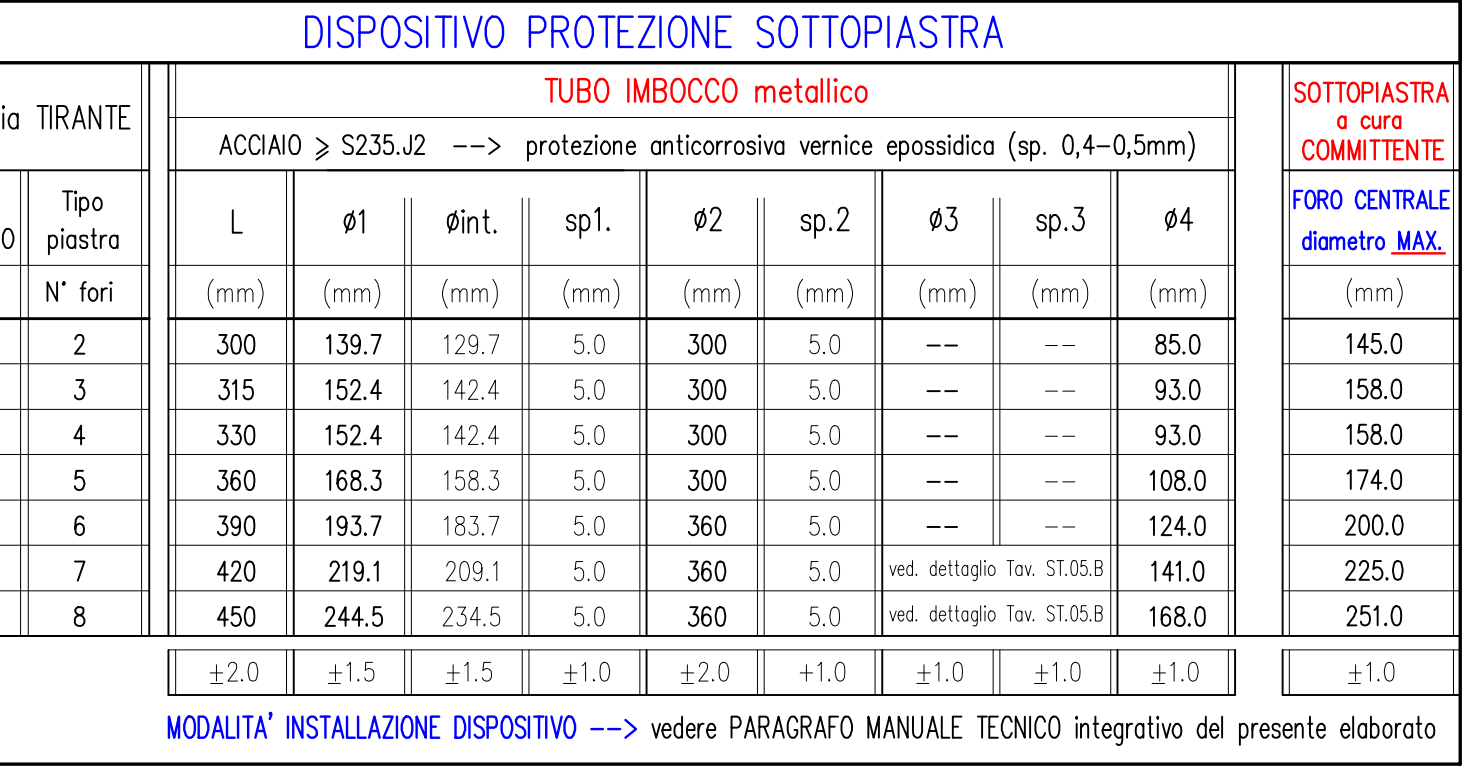
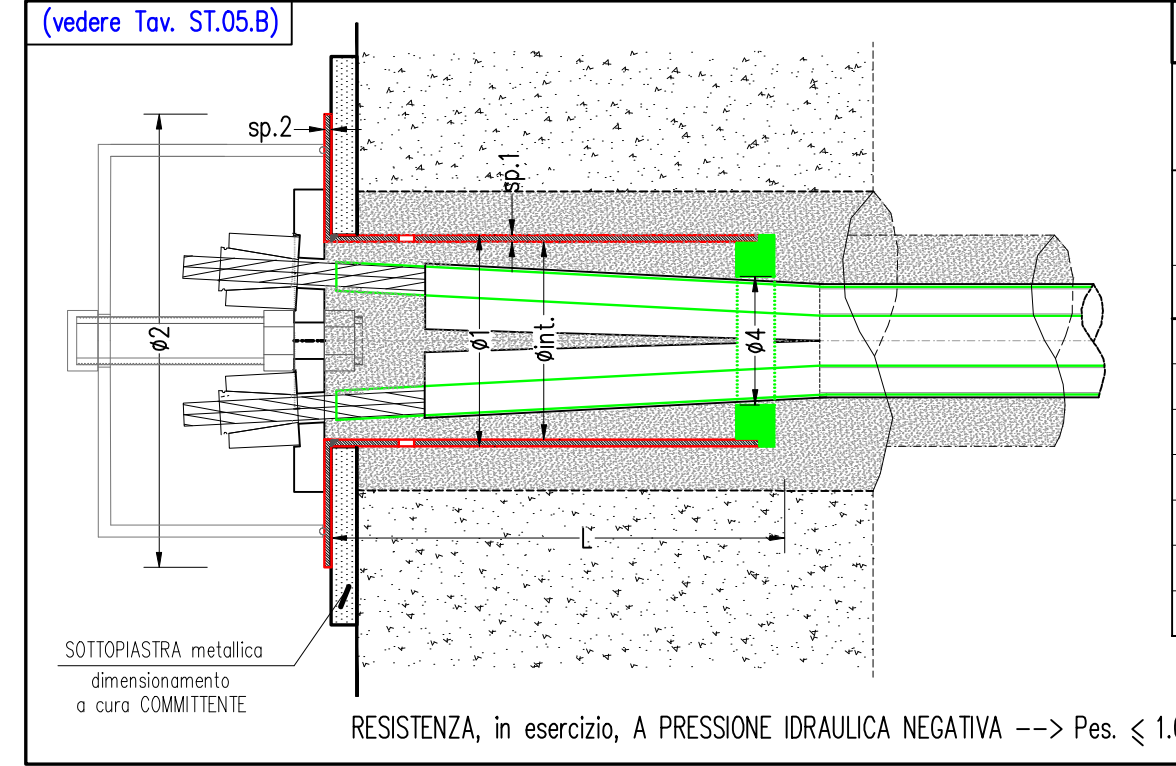
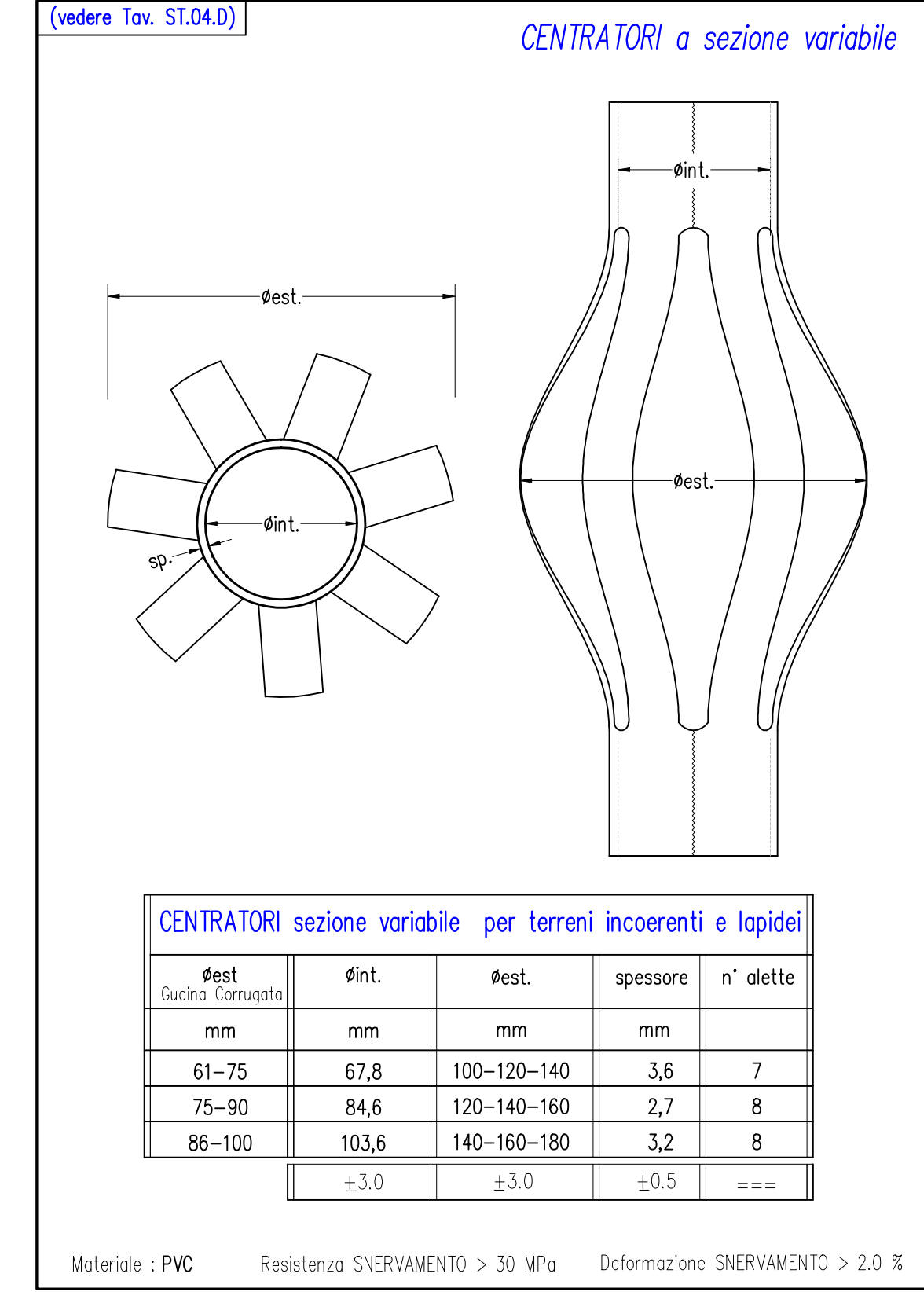
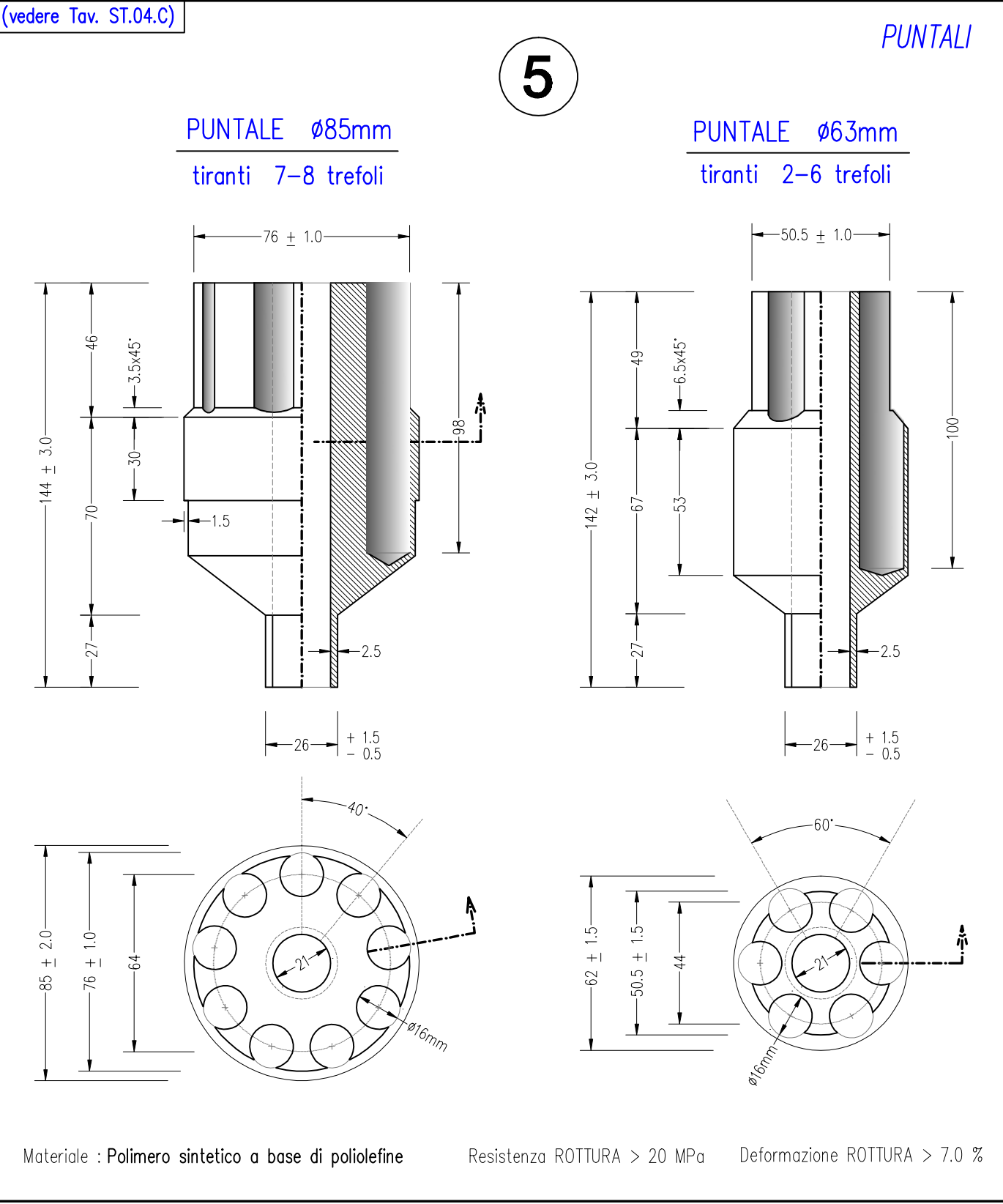
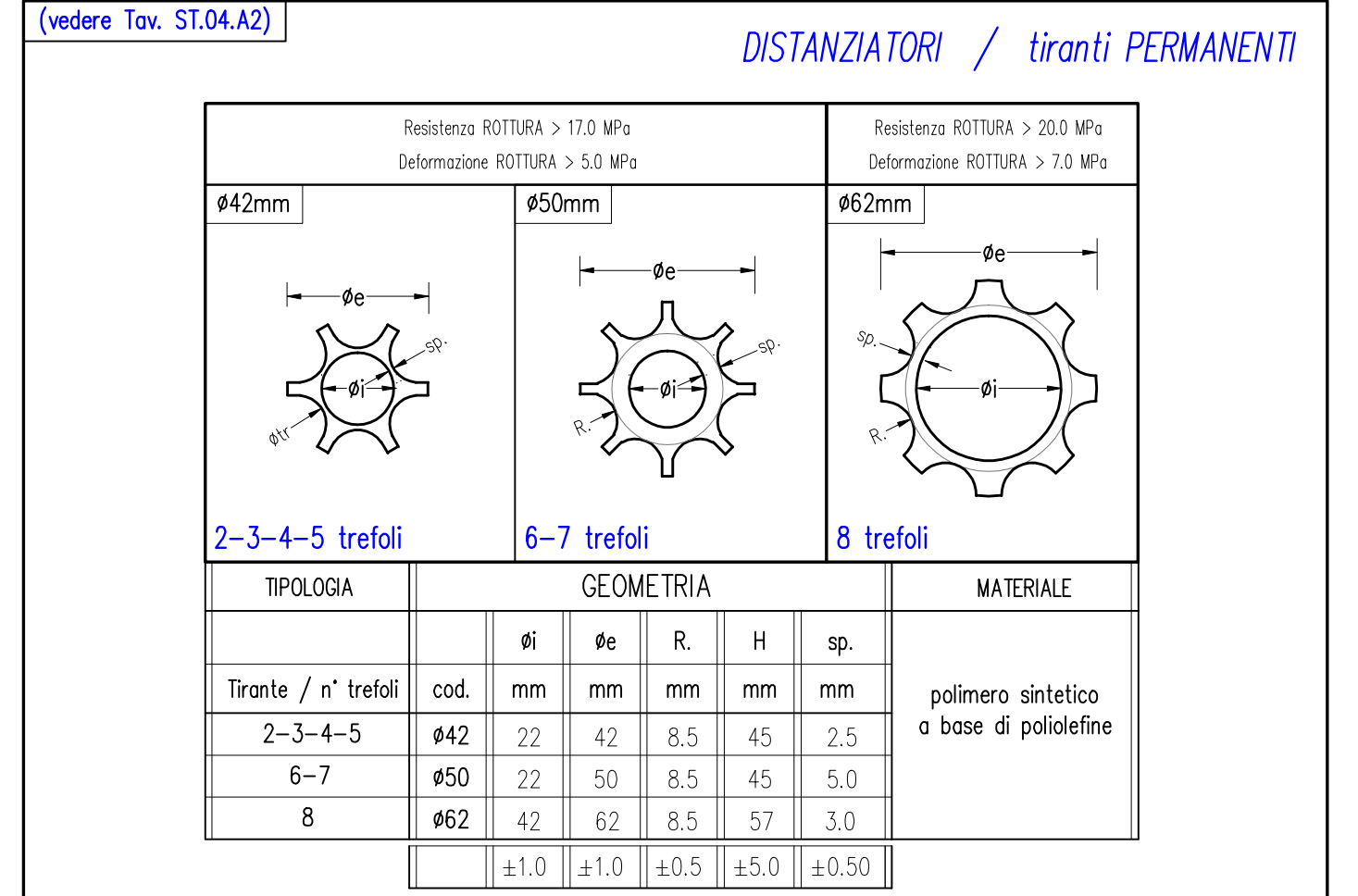
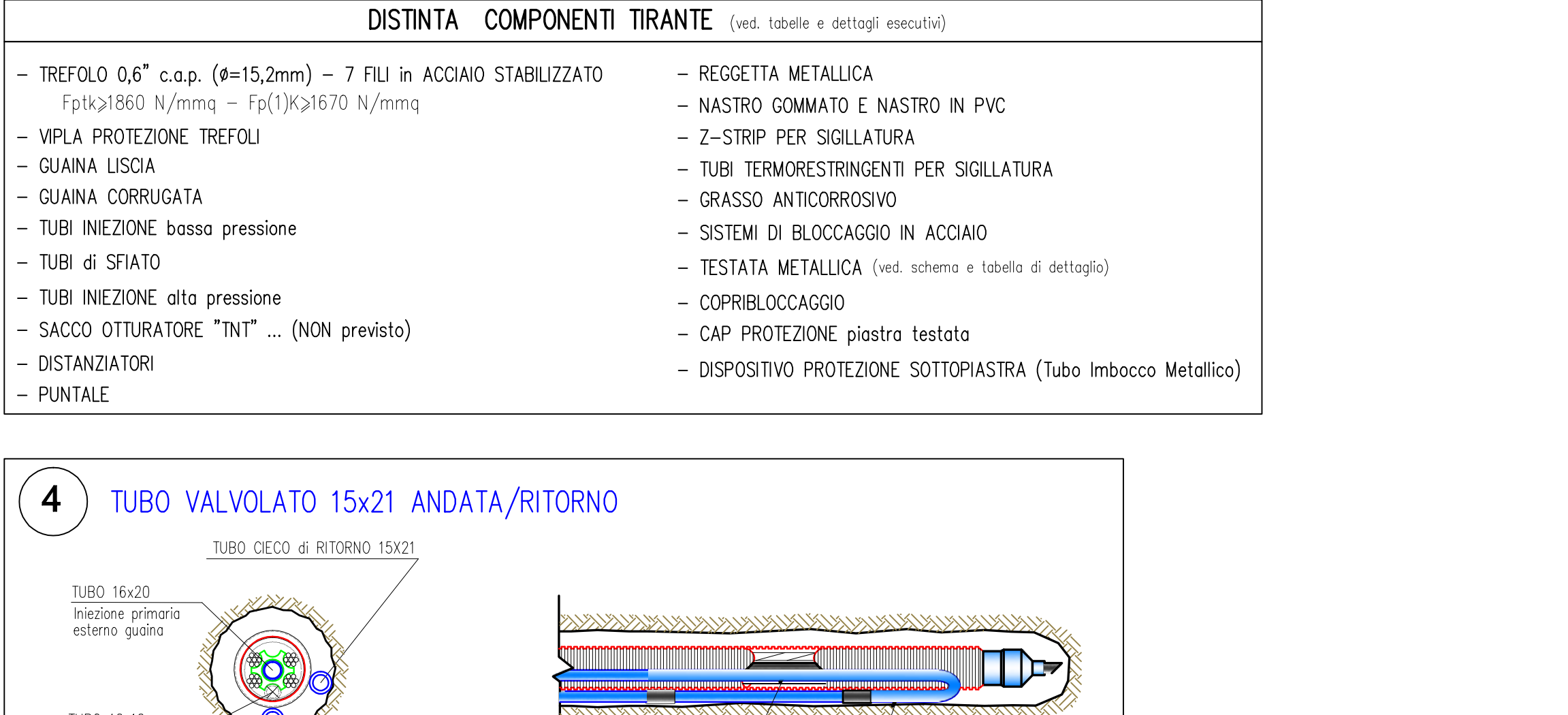
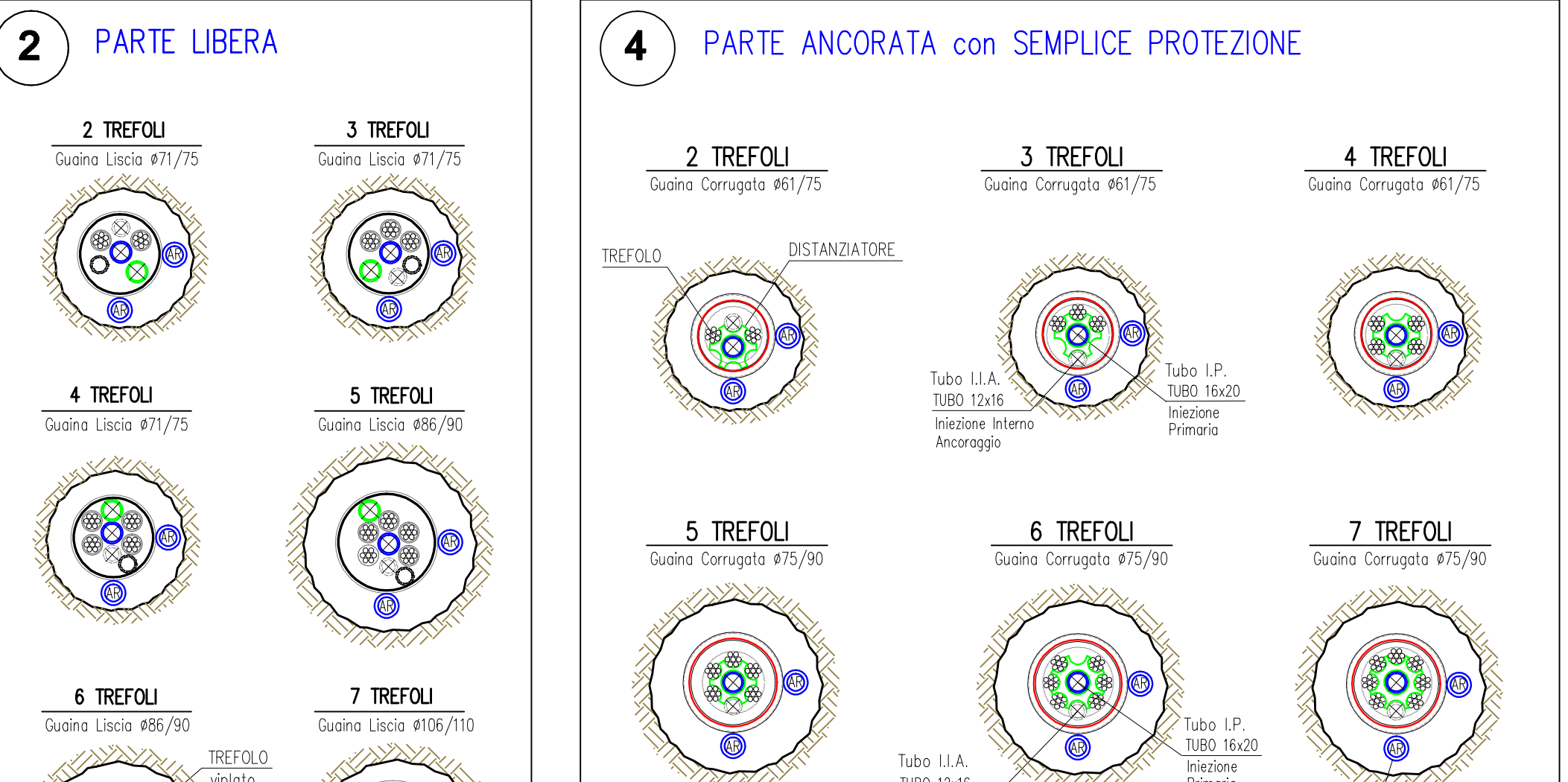
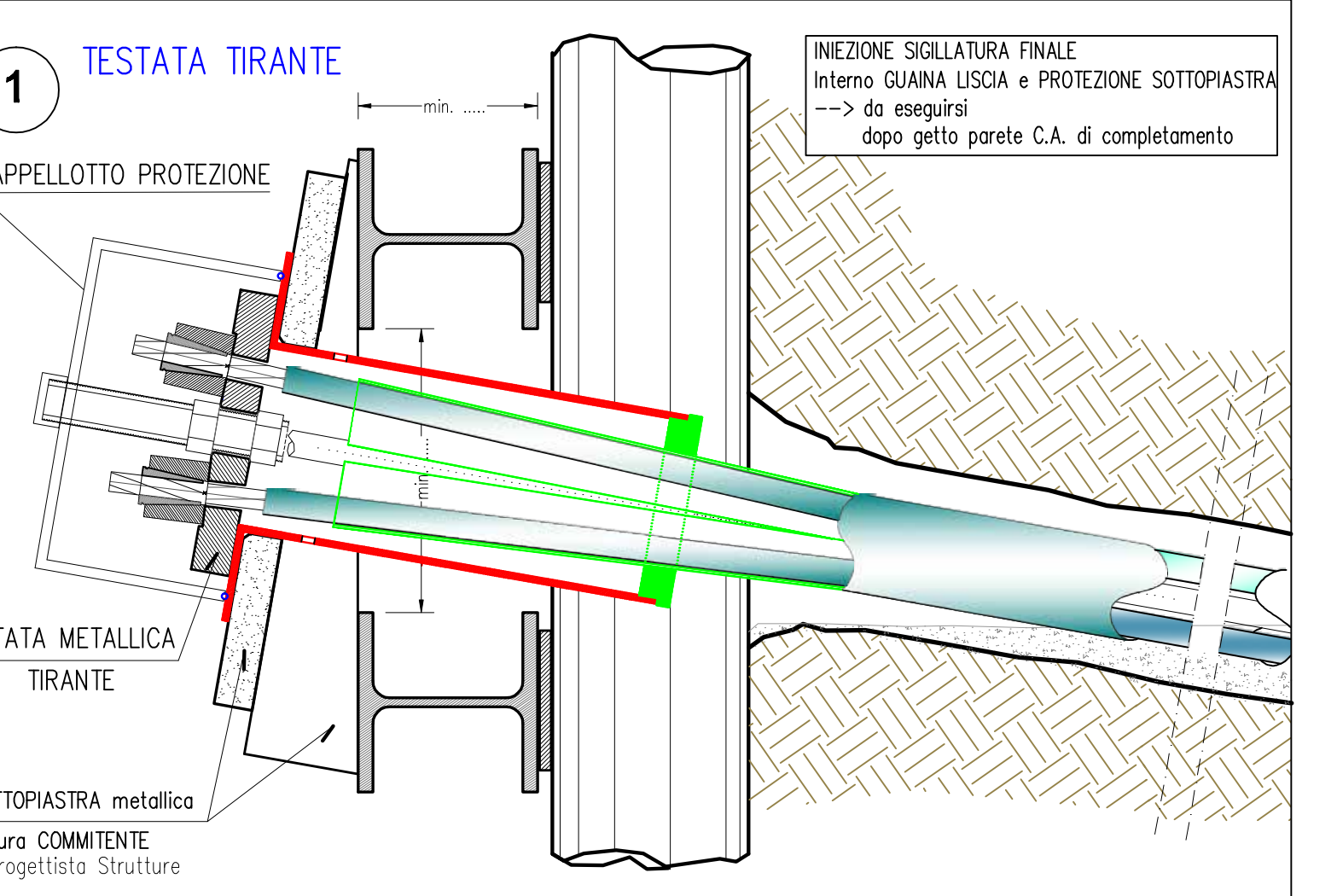
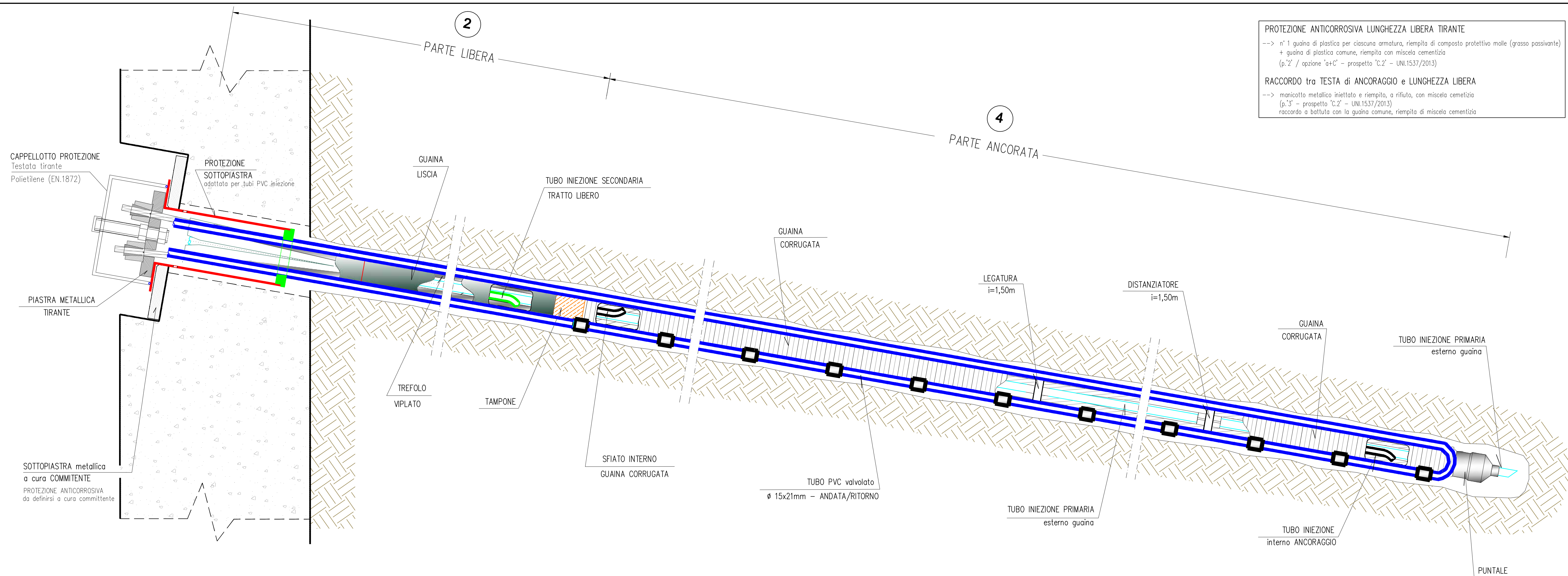
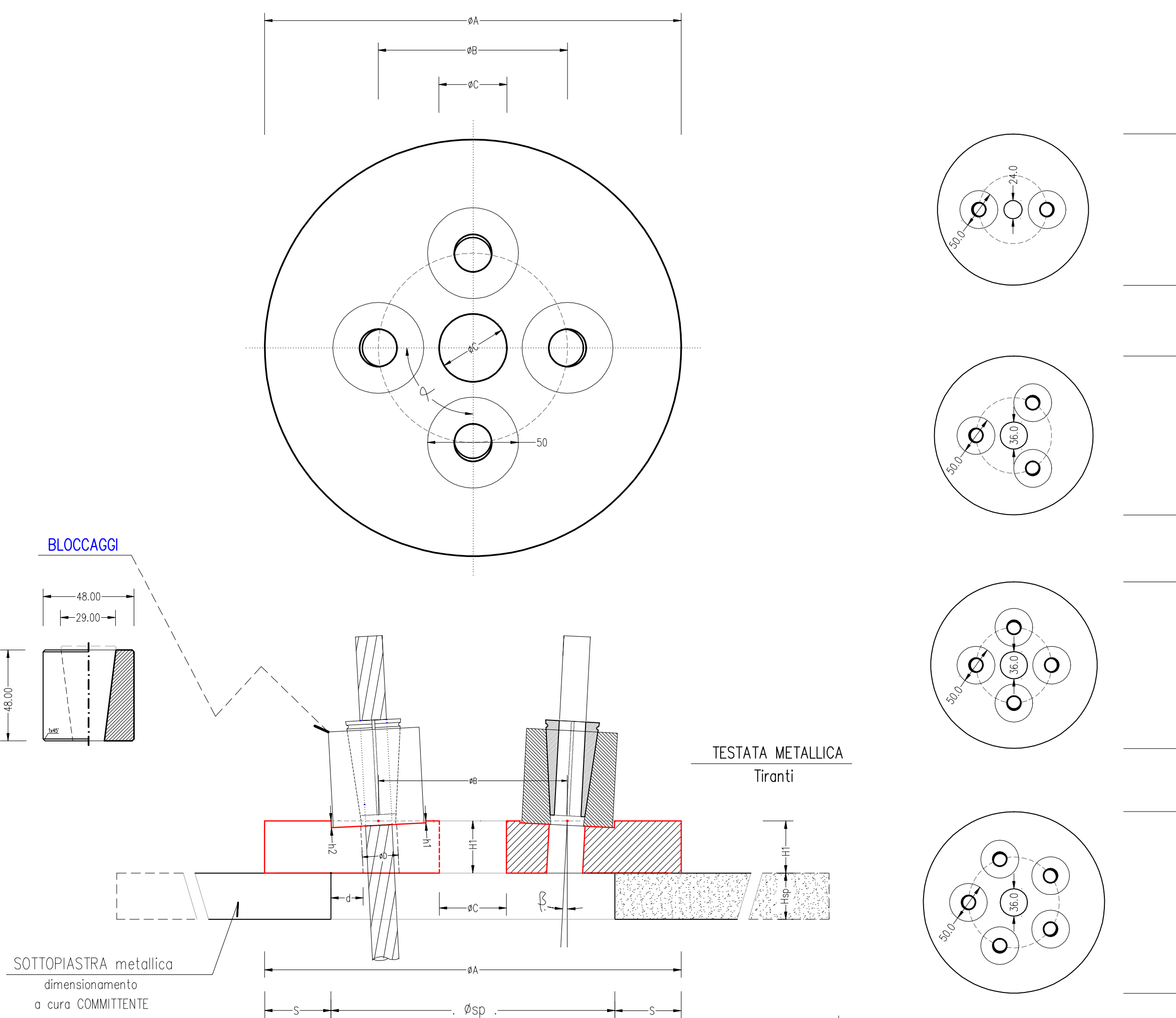


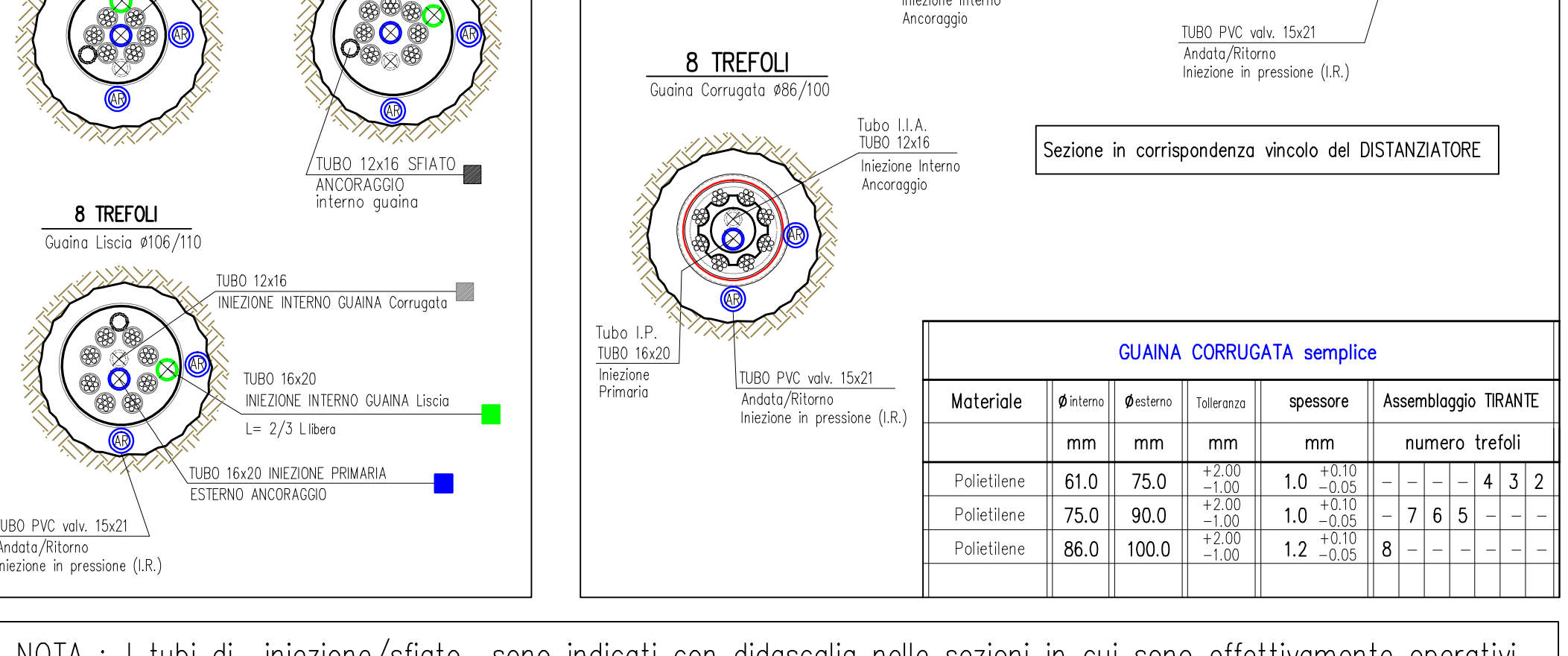
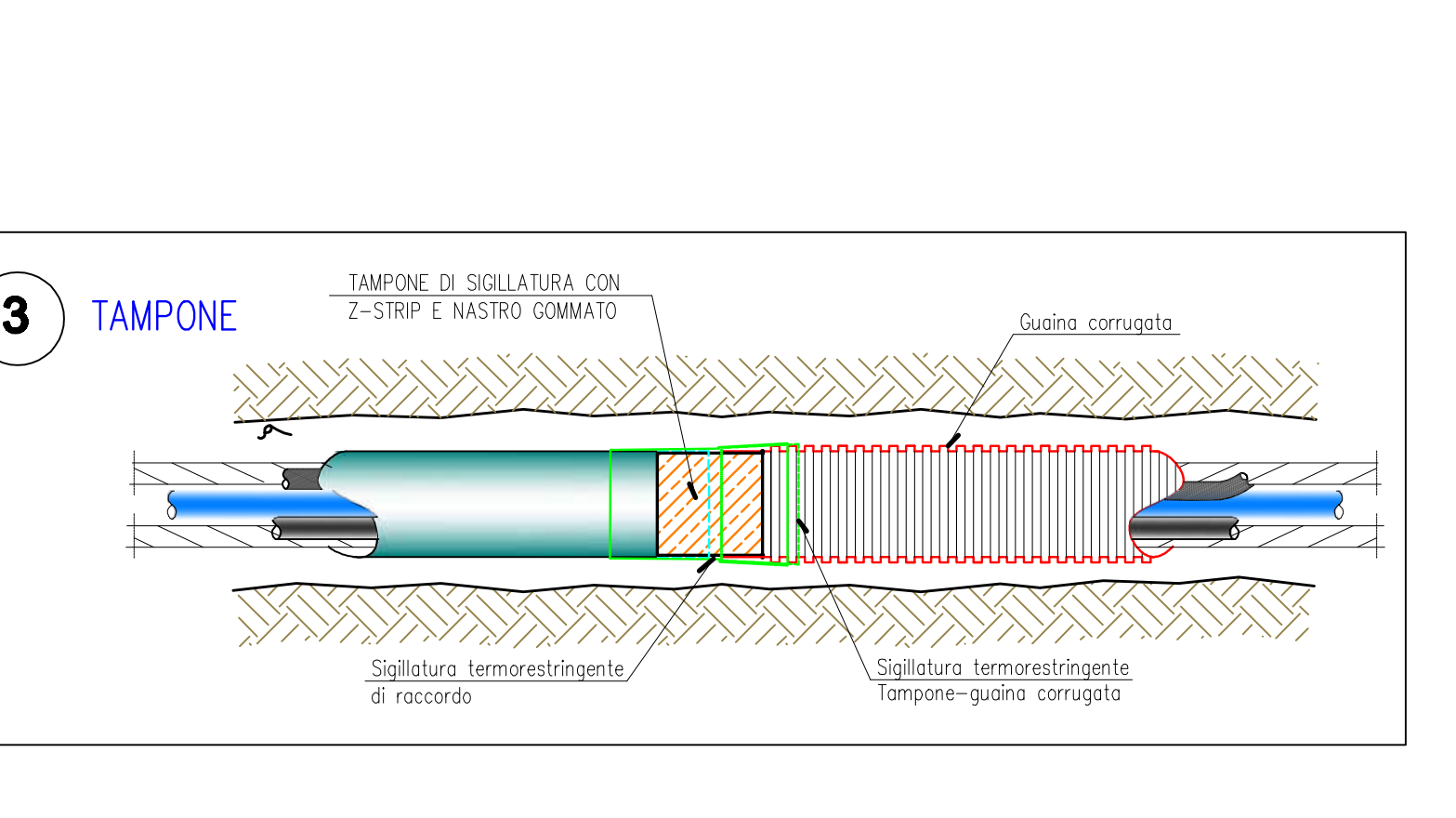
| GUAINA PROTEZIONE + TUBI INIEZIONE / SFIATO<br>(vedere Tav. ST.03.A - ST.03.B) |  |                  |                  |                  |  |     |     |     |     |
|--|--|------------------|------------------|------------------|--|-----|-----|-----|-----|
| FUNZIONE   | MATERIALE                                      | Spessore<br>(mm) | Spessore<br>(mm) | Spessore<br>(mm) | Assemblaggio TIRANTE<br>numero tiranti |     |     |     |     |
| colore   | VIPLATURA                                      |                  |                  |                  |  |     |     |     |     |
| Grigio   | VIPLATURA                                      | 16.5             | 19.5             | 1.50             | 2,2                                    | 3,5 | 4,3 | 5,2 | 6,1 |
| colore   | GUAINA LISCIA                                  |                  |                  |                  |  |     |     |     |     |
| ---  | Protezione tratto libero                       | 71.0             | 75.0             | 2.0              | ---                                    | --- | --- | --- | --- |
| ---  | Protezione tratto ancoraggio                   | 86.0             | 90.0             | 2.0              | ---                                    | --- | --- | --- | --- |
| ---  | Protezione tratto libero                       | 106.0            | 110.0            | 2.0              | ---                                    | --- | --- | --- | --- |
| colore   | GUAINA CORRUGATA                               |                  |                  |                  |  |     |     |     |     |
| ---  | Protezione tratto ancoraggio                   | 61.0             | 75.0             | 1.0              | ---                                    | --- | --- | --- | --- |
| ---  | Protezione tratto libero                       | 75.0             | 90.0             | 1.0              | ---                                    | --- | --- | --- | --- |
| ---  | Protezione tratto ancoraggio                   | 86.0             | 100.0            | 1.2              | ---                                    | --- | --- | --- | --- |
| colore   | Tubi INIEZIONE BASSA PRESSIONE                 |                  |                  |                  |  |     |     |     |     |
| ---  | Iniezione primaria ancoraggio (esterno guaina) | 16.0             | 20.0             | 2.00             | 8                                      | 7   | 6   | 5   | 4   |
| ---  | Iniezione primaria ancoraggio (interno guaina) | 12.0             | 16.0             | 2.00             | 8                                      | 7   | 6   | 5   | 4   |
| ---  | NON previsto                                   | ---              | ---              | ---              | ---                                    | --- | --- | --- | --- |
| ---  | Iniezione secondaria (interno guaina libera)   | 16.0             | 20.0             | 2.00             | 8                                      | 7   | 6   | 5   | 4   |
| colore   | Tubi SFIATO                                    |                  |                  |                  |  |     |     |     |     |
| ---  | NON previsto                                   | ---              | ---              | ---              | ---                                    | --- | --- | --- | --- |
| ---  | Sfiato ancoraggio (interno guaina)             | 12.0             | 16.0             | 2.00             | 8                                      | 7   | 6   | 5   | 4   |
| ---  | NON previsto                                   | ---              | ---              | ---              | ---                                    | --- | --- | --- | --- |
| colore   | Tubi INIEZIONE VALVOLATI                       |                  |                  |                  |  |     |     |     |     |
| ---  | Tubo centrale esterno - Iniezione I.A.S.       | PVC / Alu        | 27.0             | 33.3             | 3.15                                   | --- | --- | --- | --- |
| ---  | Tubo esterno anodizzato - Iniezione I.R.       | PVC / Sbar       | 15.0             | 21.0             | 3.00                                   | --- | --- | --- | --- |



**TESTATE METALLICHE + BLOCCAGGI**  
(vedere schema esecutivo Tav. ST.02) (vedere schema esecutivo Tav. ST.01)



| TESTATE METALLICHE per TIRANTI 300-1200 kN<br>ACCIAIO S355J2 (UNI-EN-10025-2) ALX77E |              |         |     |     |      |      |      |       |     |      |
|--|--------------|---------|-----|-----|------|------|------|-------|-----|------|
| TIPOLOGIA  | TIPO piastra | Acciaio | ØA  | ØC  | Ø1   | Ø2   | Ø3   | Ø4    | Ø5  | Ø6   |
| Carico ESERIZIO  | ---          | ---     | --- | --- | ---  | ---  | ---  | ---   | --- | ---  |
| kN   | N° fori      | ---     | --- | --- | ---  | ---  | ---  | ---   | --- | ---  |
| 300  | 2            | S355J2  | 200 | 90  | 24.0 | 20.0 | 180  | 3.0   | 1.0 | 3.60 |
| 450  | 3            | S355J2  | 210 | 100 | 36.0 | 20.0 | 120  | 3.0   | 1.0 | 3.60 |
| 600  | 4            | S355J2  | 220 | 100 | 36.0 | 25.0 | 20.0 | 90    | 3.0 | 1.0  |
| 750  | 5            | S355J2  | 240 | 120 | 36.0 | 30.0 | 20.0 | 72    | 3.0 | 1.0  |
| 900  | 6            | S355J2  | 260 | 140 | 36.0 | 35.0 | 20.0 | 60    | 3.0 | 1.0  |
| 1050   | 7            | S355J2  | 280 | 160 | 36.0 | 40.0 | 20.0 | 51.43 | 3.0 | 1.0  |
| 1200   | 8            | S355J2  | 300 | 190 | 36.0 | 45.0 | 20.0 | 45    | 3.0 | 1.0  |



IL PRESENTE DOCUMENTO E' DI PROPRIETA' ESCLUSIVA DI DE.CA. SRL  
A termini di legge è rigorosamente vietato riprodurre o comunicare a terzi il contenuto